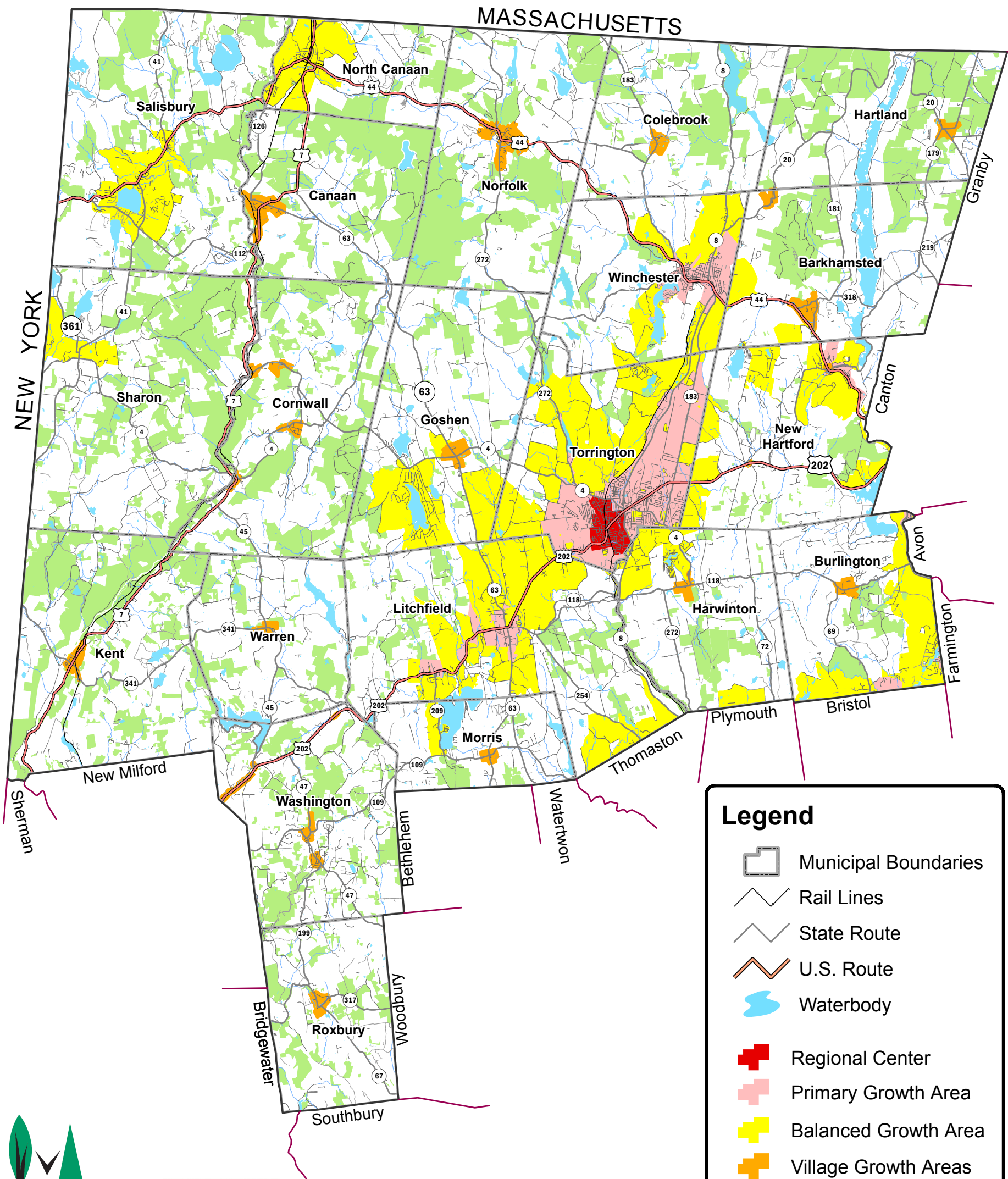




# Sustainable Growth Policy Map

## Northwest Hills Council of Governments Region



### Legend

- Municipal Boundaries
- Rail Lines
- State Route
- U.S. Route
- Waterbody
- Regional Center
- Primary Growth Area
- Balanced Growth Area
- Village Growth Areas
- Protected Open Space
- Rural Areas



### Map Data Sources

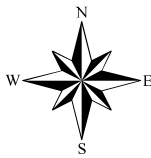
Protected Open Space data layer created by The Housatonic Valley Association in cooperation with The Litchfield Hills Greenprint.

Municipal boundaries and waterbodies provided by the Connecticut Department of Energy and Environmental Protection. (DEEP CTECO)

Rail lines, U.S. routes, and state routes layers provided by the U.S. Census. (TIGER Data)

Primary Growth Areas, Balanced Growth Areas, Village Growth Areas and Rural Areas adapted from Connecticut Office of Policy and Management's (CT OPM) Conservation and Development Policies Plan.

Regional Center provided by The City of Torrington.



0 1.25 2.5 5 7.5 10 Miles

Connecticut State Plane Projection on the North American Datum 1983 (2011)

### Map Notes

When considering infrastructure investments, the conservation focus areas shown on the conservation policy maps should also be taken into consideration.

Map prepared by  
Stacy Deming  
GIS Manager  
Housatonic Valley Association

Map Created: 10/3/2017