



Climate Change Adaptation

Background & Next Steps for the Northwest Hills



Presentation Outline

- ▶ Quick Introduction of my background
- ▶ Difference between Adaptation & Mitigation
- ▶ Current efforts in Connecticut
- ▶ Projected Impacts in NW CT
- ▶ Action Steps

MITIGATION

Actions that reduce the human contribution to the planetary greenhouse effect



ADAPTATION

Adjustment in natural or human systems to a new or changing environment

Current State Efforts on Adaptation

- ▶ State has ambitious mitigation goal, no state-wide coordination on adaptation
- ▶ Existing efforts focus on coastal communities, especially affected by Hurricane Sandy.
- ▶ Scattered adaptation research and projects so far but do include flooding models, municipal interviews, and CIRCA grants
- ▶ “Connecticut Climate Change Preparedness Plan” 2011

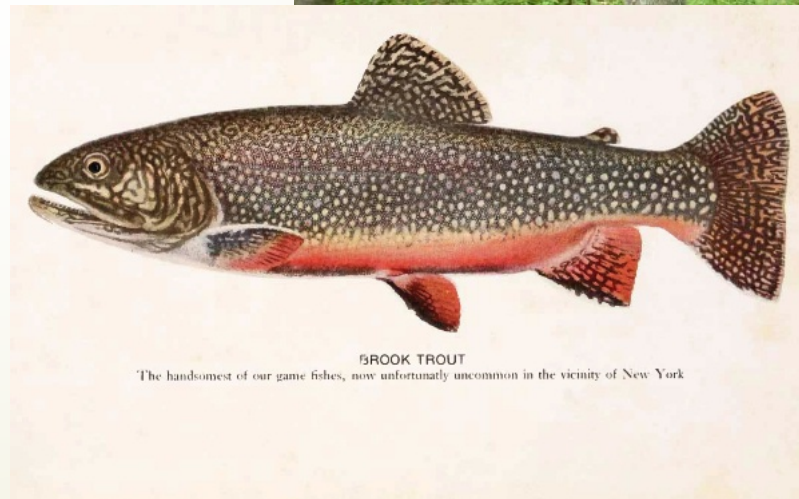
Projected Impacts

- More frequent days with temperature above 90°F
- Heatwaves increase in frequency, duration, and intensity
- Longer growing season
- Less snow, more rain in winter
- Reduced snowpack → increased snow density
- Earlier breakup of ice on lakes and rivers
- Earlier spring snow melt → earlier peak river flows

Agriculture

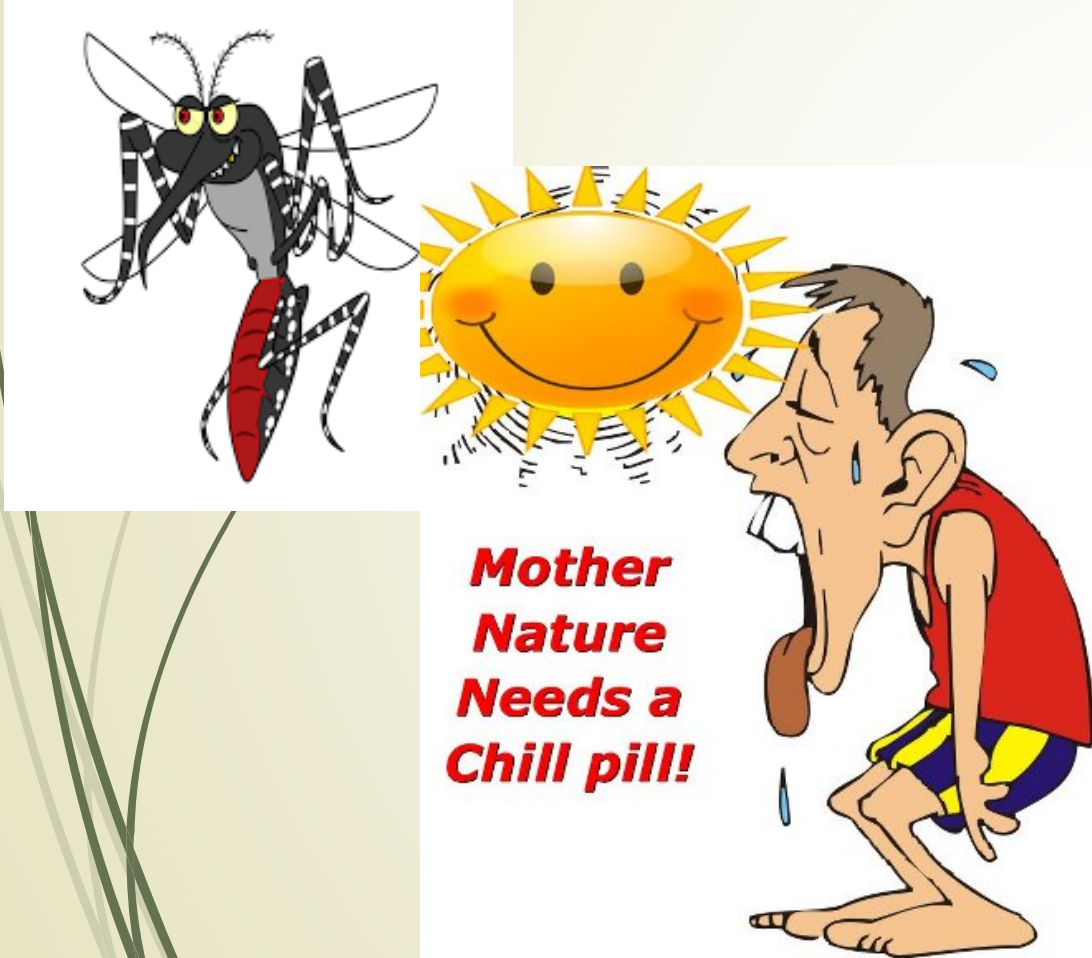


Natural Resources

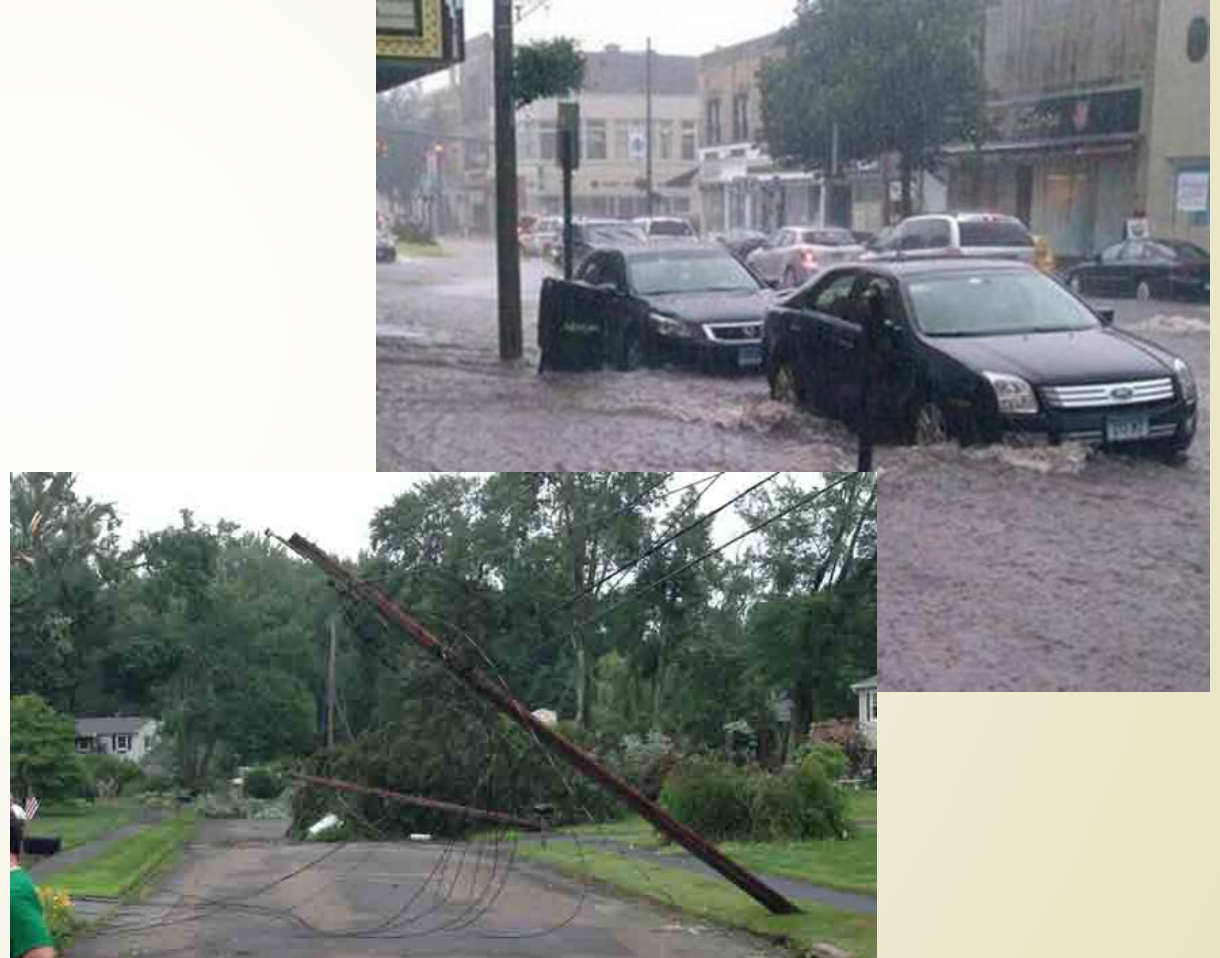


BROOK TROUT
The handsomest of our game fishes, now unfortunately uncommon in the vicinity of New York

Public Health



Infrastructure



Action Steps

